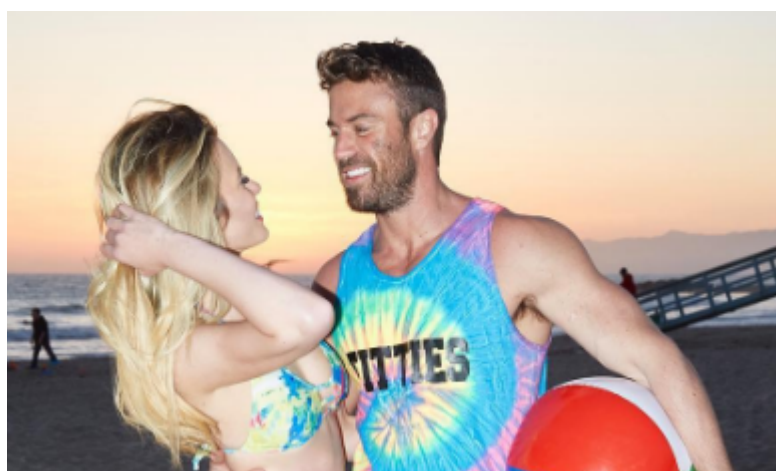


# Celebrity Couple News: 'Bachelorette' Villain Chad Johnson Is Dating Zoe Baron



By [Marissa Donovan](#)

[Bachelorette](#) and [Bachelor in Paradise](#) bad boy Chad Johnson is currently in a serious relationship! Johnson has been swept away by model Zoe Baron. The two connected over Baron asking Johnson for [fitness tips](#). Baron also shared with [ETOnline.com](#) that they've been dating for a few months, but have recently made it official. This [celebrity couple](#) has been taking beach photos together on each other's Instagram accounts. Let's hope this relationship will calm down Johnson's wild ways.

**It's a miracle! The  
Bachelorette villain Chad Johnson  
secured a girlfriend. How can you**

# tell if your new partner has a mean streak?

## Cupid's Advice:

Short tempered partners may act differently around you, but you should still be on your toes for their behavior. Watch out for these warning signs:

**1. Their mouth lacks a filter:** It's sometimes important for people to have the last word. Your partner may lack a filter on what is not okay to say. Let them know when a statement is uncalled for and hope they understand your disgust.

**Related Link:** [Celebrity News: 'Bachelorette' Villain Chad Johnson Defends Bad Behavior](#)

**2. They act on jealousy:** Jealousy brings out the worst in anyone. If your partner is already hot headed, this could mean there's trouble ahead. Talk with your partner about their feelings and maybe you can find a healthy resolution.

**Related Link:** [Relationship Advice: Can You Cheat Jealously?](#)

**3. They lack respect boundaries:** Does your partner try to manipulate a situation out of spite or make you feel uncomfortable when they're angry? This is a good time to seek professional guidance to help your partner work out their anger. As much as you care about your partner, your safety is important as well. Once your partner can realize their actions are harmful, then there's a chance you both can be happy together!

**What advice do you have for dealing with a partner with a mean streak? Leave your tips below for a reader that needs them!**